

WASHER, CYLINDER AND SPRINGS 5500

Materials are used for grounding, contact point water tight rings or flexible springs. These can be used to contact PCB to housing.



Standard Nickel-graphite conductive rubber is used for EMI applications. The rubber is made conductive by incorporating small conductive metal particles throughout the material. It can provide an EMI-proof and watertight seal in narrow constructions. But they are also useful for EMP protection, wave-guide applications and against static electricity.

When in need of high deflection and low closure force we make conductive foams. The material will return to almost its original height when released. The foam is covered with a layer of conductive polyurethane to protect it from environmental influences and to prevent burrs when cutting. Its conductivity is excellent in all directions (X, Y, and Z). Conductive foam is fire retardant as well as RoHS compliant.

AVAILABLE MATERIAL & THICKNESS

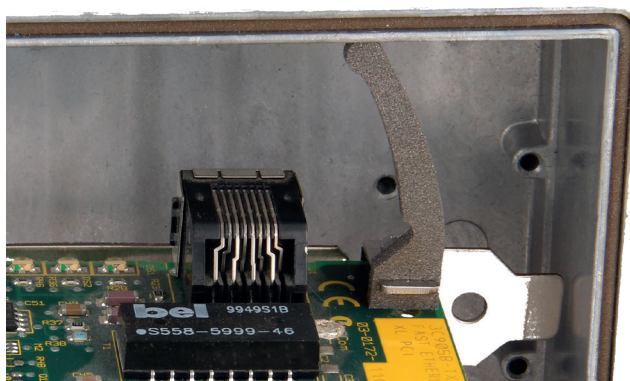
Material	Thickness (mm)
Conductive foam (FOAM)	1.0, 2.0, 3.0
Silver plated aluminum conductive rubber (SPA)	1.0, 2.0, 3.0
Carbon filled conductive rubber (GRA)	1.0, 2.0, 3.0
Nickel graphite filled silicone conductive rubber (NIG)	1.0, 2.0, 3.0
Other thickness on request	

BENEFITS

- Any size in a few day's
- Custom parts
- High temperature up to 220 °C
- Easy to mount
- Water tight constructions

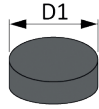
OPTIONS

- Available in different thicknesses
- Low compression force
- Rubber with silver particles



» WASHER, CYLINDER AND SPRINGS 5500

5500-C CYLINDER

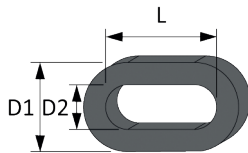


D1 (mm)	
2	16
3	18
4	20
5	22
6	24
8	26
10	28
12	30
14	32
Other dimensions on request. MOQ 10 pieces	

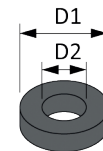


5500-R WASHER/RING

5500-OR OVAL-RING



D1	D2	L
5	2	10-15-20-25-30-35
7	3	15-20-25-30-35-40
9	4	20-25-30-35-40-45
Other dimensions on request. Packed in bags of 10 pieces		

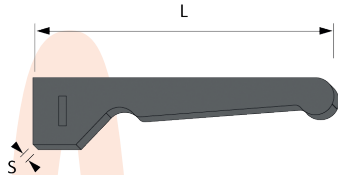


D1 x D2	
5 x 2	32 x 16
7 x 3	36 x 18
9 x 4	40 x 20
10 x 5	44 x 22
12 x 6	48 x 24
16 x 8	52 x 26
20 x 10	56 x 28
24 x 12	60 x 30
28 x 14	64 x 32
Other dimensions on request. MOQ 10 pieces	

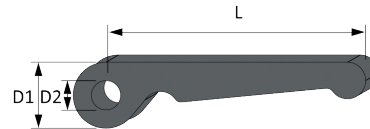
GROUND SPRINGS (ON REQUEST)

Following product example can only be made in Nickel-graphite conductive rubber in 1.0, 1.5, 2.0, and 3.0 mm thickness and can be made in different sizes according to customer drawing. For a product specific request, please contact us.

5500-VGS VERTICAL GROUNDING SPRING



5500-GS GROUNDING SPRING



ORDER EXAMPLE

Series	Shape	Material	D1	D2	L
5500	C : Cilinder R : Washer/Ring OR : oval-ring GS : Ground spring VGS : Vertical grounding spring	FOAM : Conductive foam SPA : Silver plated aluminum conductive rubber GRA : Carbon filled conductive rubber NIG : Nickel graphite filled silicone conductive rubber			
	Thickness (mm) Standard 1.0, 2.0, 3.0. Other on request.	Adhesive 02 : Without self-adhesive 03 : With conductive adhesive			