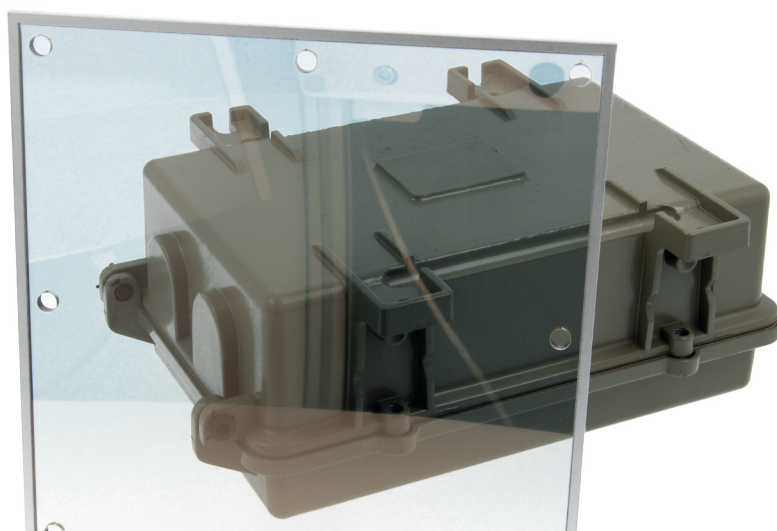


# TRANSPARENT SHIELDING FOIL WINDOWS 9910

Ready-made transparent EMI-shielding foil windows for moderate EMI shielding, with good light transmittance and transparency.

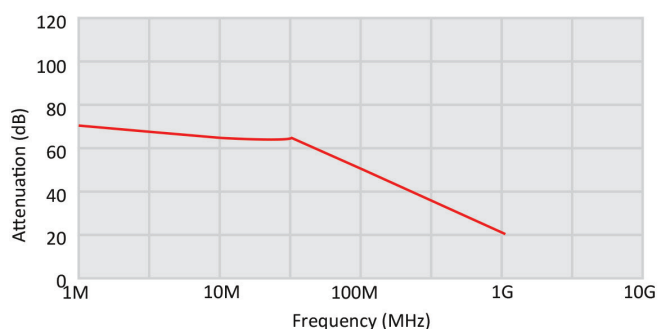


Transparent EMI/RFI-shielding foil windows 9910 series consist of a strong polyester film with a layer of transparent conductive coating from our 9900 series Transparent shielding foil laminated on one side of a single glass or plastic window.

Transparent EMI/RFI-shielding foil 9910 series can also be laminated onto an existing window, if the window is brought to us, or onto any new window made of:

- Polycarbonate (**material code P**)
- Acrylic (**material code A**)
- Glass (**material code G**)

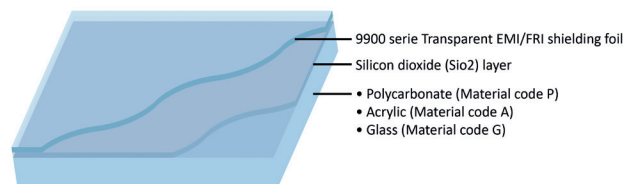
## SHIELDING PERFORMANCE\*



These values are measured under laboratory conditions. In other situations results may differ. Please read our Guarantee.

\*For transparent shielding solutions with high shielding performance see Mesh foil 9000 series or Ready-made mesh foil windows 9700 series.

## TECHNICAL DRAWING



## CONTACT EDGES



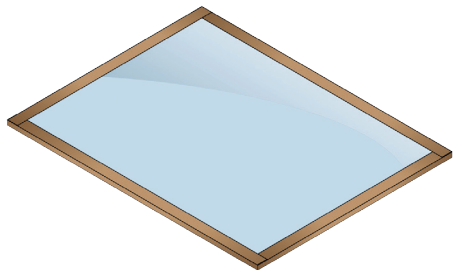
Transparent EMI/RFI-shielding foil window 9910 series is only conductive on one side. If you want to make a connection with the other side of the window which is not conductive, we can add a contact edge for you. We can also supply the windows complete with an aluminum frame for easy mounting in Faraday cages and MRI rooms.

On the next page you will see the contact edges that are available for a 9910 series Transparent EMI shielding window.

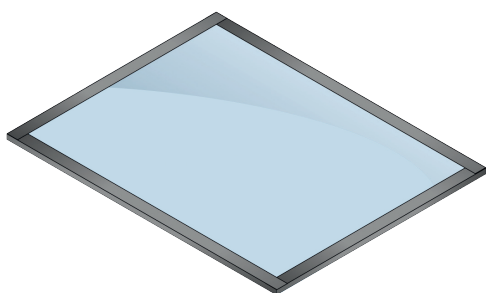


## » TRANSPARENT SHIELDING FOIL WINDOWS 9910

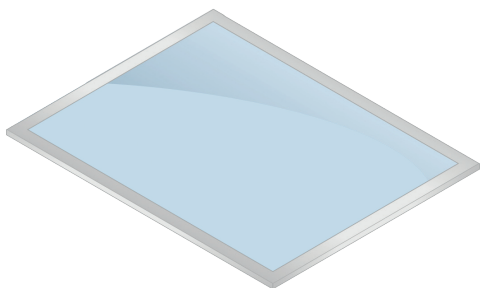
### CONTACT EDGES



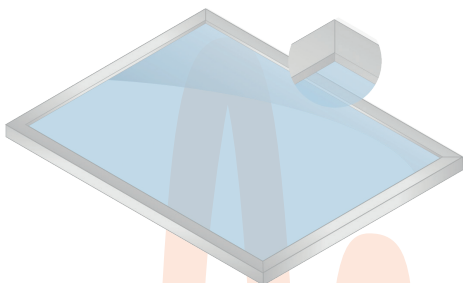
(C) With copper edges for grounding



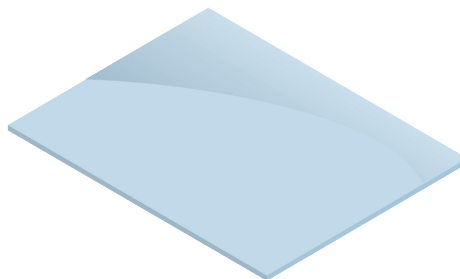
(TC) With tinned copper edges for easy soldering and grounding



(S) With a silver busbar



(F) With an aluminum frame for shielded enclosures, Faraday cages and MRI rooms



(N) Without a special contact edge; there still is electrical conduction at the coated side of the glass.

### MOUNTING

Connection from the conductive side of the Transparent EMI/RFI shielding foil 9900 series to a conductive mounting surface of the construction can be provided by Shielded tape 3201 series or by clamp-mounted Ultra soft shield 7400 series.

**Please note:** the top layer can be affected by acid, for example from the skin. To protect the conductive layer, you can apply a transparent film or use the non-conductive side on top.

Small optical defects are allowed in this product. If you need a product that is absolutely free from optical defects, please contact us for the "superior selected quality". Do be aware though that due to the extreme caution required to manufacture these products, they can be several times more expensive.

### ORDER EXAMPLE

Series	Width (mm)	Height (mm)
9910	Width of the visible area in mm. So without a possible contact edge.	Length of the visible area in mm. So without a possible contact edge.
Window material	Thickness (mm)	Contact edge
P : Polycarbonate A : Acrylic G : Glass	Specify the thickness of the window in mm	C : Copper TC : Tinned copper F : With frame S : Silver busbar N : No contact edge