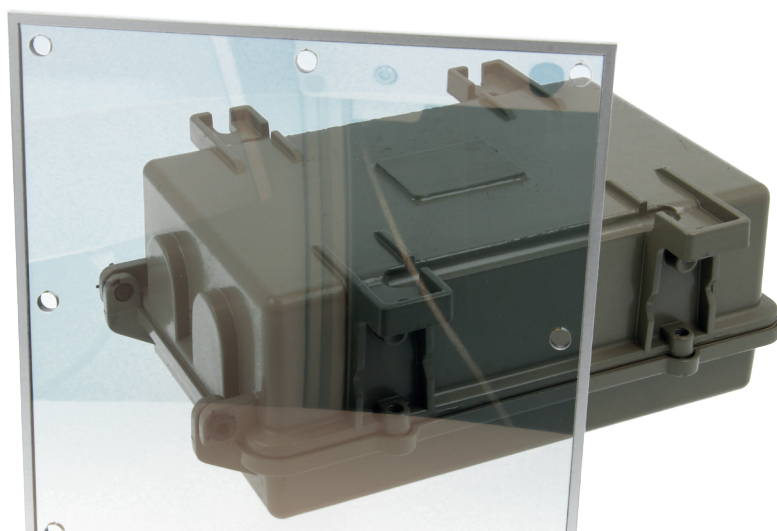


# TRANSPARENT SHIELDING FOIL WINDOWS 9910

Ready-made transparent EMI-shielding foil windows for moderate EMI shielding, with good light transmittance and transparency.

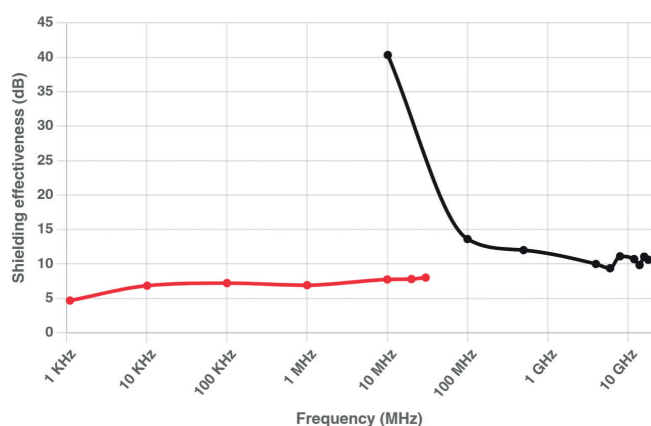


Transparent EMI/RFI-shielding foil windows 9910 series consist of a strong polyester film with a layer of transparent conductive coating from our 9900 series Transparent shielding foil laminated on one side of a single glass or plastic window.

Transparent EMI/RFI-shielding foil 9910 series can also be laminated onto an existing window, if the window is brought to us, or onto any new window made of:

- Polycarbonate (**material code P**)
- Acrylic (**material code A**)
- Glass (**material code G**)

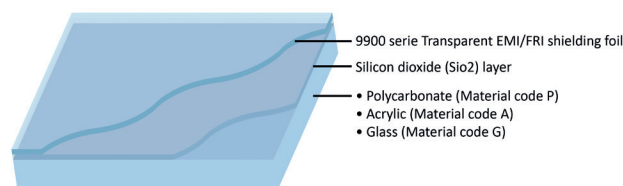
## SHIELDING PERFORMANCE\*



■ 9910 - Transparent EMI/RFI-shielding window magnetic    ■ 9910 - Transparent EMI/RFI-shielding window electric+planewave

These values are measured under laboratory conditions. In other situations results may differ. Please read our Guarantee.

## TECHNICAL DRAWING



## CONTACT EDGES

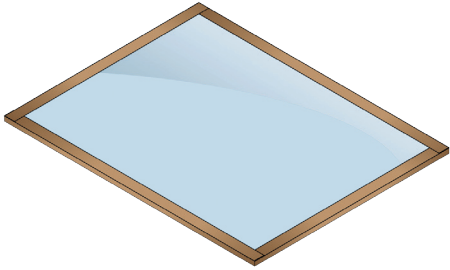


Transparent EMI/RFI-shielding foil window 9910 series is only conductive on one side. If you want to make a connection with the other side of the window which is not conductive, we can add a contact edge for you.

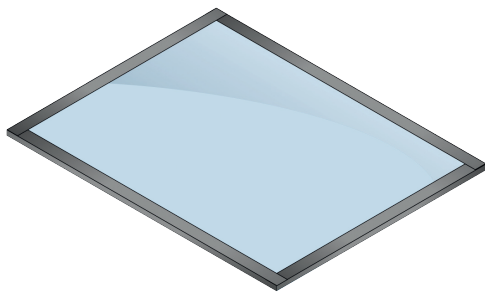
We can also supply the windows complete with an aluminium frame for easy mounting in Faraday cages and MRI rooms.

## » TRANSPARENT SHIELDING FOIL WINDOWS 9910

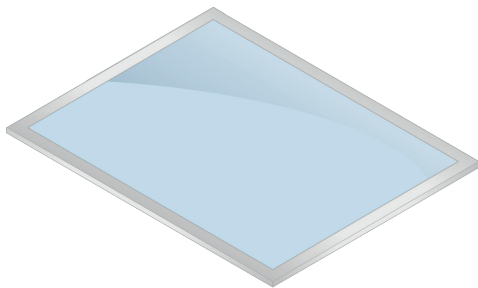
### CONTACT EDGES



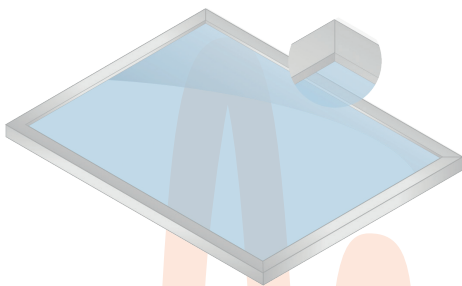
**(C) With copper edges for grounding**



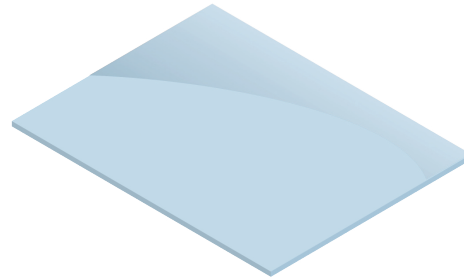
**(TC) With tinned copper edges for easy soldering and grounding**



**(S) With a silver busbar**



**(F) With an aluminium frame for shielded enclosures, Faraday cages and MRI rooms**



**(N) Without a special contact edge; there still is electrical conduction at the coated side of the glass.**

### MOUNTING

Connection from the conductive side of the Transparent EMI/RFI-shielding foil window 9910 series to a conductive mounting surface of the construction can be provided by Shielded tape 3201 series or by clamp-mounted Ultra soft shield 7400 series.

**Please note:** the top layer can be affected by acid, for example from the skin. To protect the conductive layer, you can apply a transparent film or use the non-conductive side on top.

Looking for the highest optical quality in transparent EMI shielding? Discover our Transparent EMI shielding copper grid PET film

### ORDER EXAMPLE

Series	Width (mm)	Length (mm)
9910	Width of the visible area in mm. So without a possible contact edge.	Length of the visible area in mm. So without a possible contact edge.
Window material	Thickness (mm)	Contact edge
<b>P</b> : Polycarbonate <b>A</b> : Acrylic <b>G</b> : Glass	Specify the thickness of the window in mm	<b>C</b> : Copper <b>TC</b> : Tinned copper <b>F</b> : With frame <b>S</b> : Silver busbar <b>N</b> : No contact edge

#### \*Notice

Information supplied in these data sheets is based on independent and laboratory tests which Holland Shielding Systems BV, hereafter referred to as HSS believes to be reliable. HSS has no control over the design of customer's product which incorporates products, therefore it is the responsibility of the user to determine the suitability for his particular application and we recommend that the user make his own test to determine suitability.

The product described in this data sheet shall be of standard quality, however the products are sold without warranty of fitness for a particular purpose, either expressed or implied, except to the extent expressly stated on HSS invoice, quotation or order acknowledgment. HSS does not warrant that products described in this data sheet will be free of conflict with existing or future patents of third parties. All risks of lack of fitness, patent infringement and the like are assumed by the user.