

HEMP/NEMP POWERLINE FILTER 8080

Withstand an unlimited amount of EMP hits and comply with the highest standards and to meet the MIL-STD-188-125 in shielding effectiveness and the E1 and E2 pulse compliance.



The 8080 HEMP/NEMP powerline filters of Holland Shielding Systems are designed to withstand the PCI test known as E1 and E2 while largely exceeding the shielding effectiveness as stated in MIL-STD-188-125.

Our R&D specialist has designed the filters so they meet the highest shielding demands with an insertion loss of 100 dB @ 9 kHz and 120 dB @ 20 kHz.

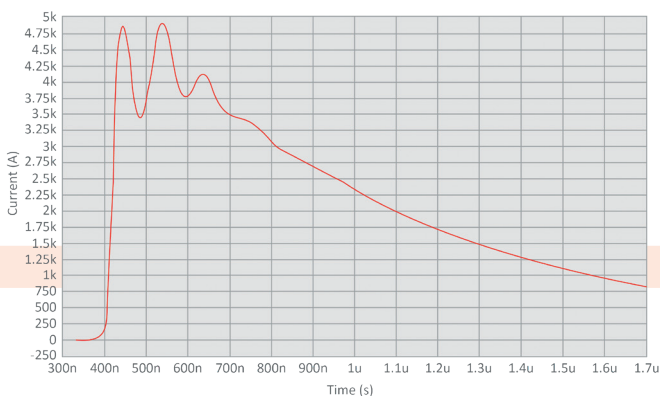
All our filters are tested with our in-house E1/E2 testing facility to confirm that they meet our high quality demands.

As the only powerline filter supplier in the world that has an E1 and E2 pulse tester in-house, we have the possibility to test and supply the filters with a short delivery time.

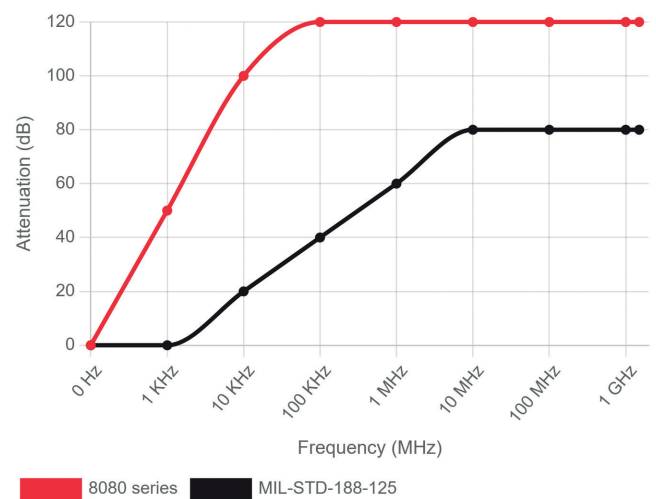
FEATURES

- 230 V / 440 VAC with 16 A – 200 A current ratings (others on request)
- Single or three phase applications
- Up to 100 dB @ 9 kHz
- Very low residual pulse current
- Quick development and delivery possible with our in-house testing facility

TEST PULSE (5 KA)



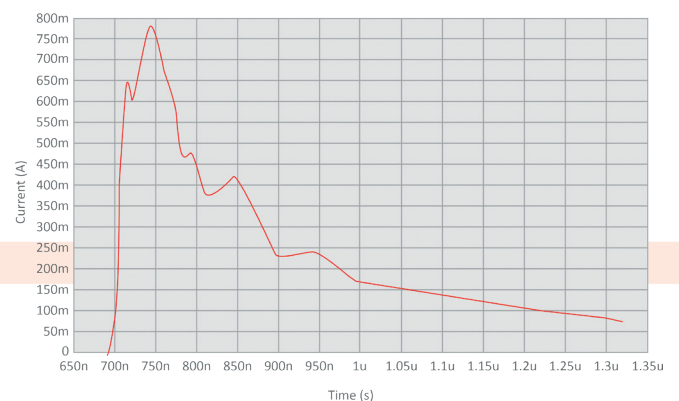
8080 - SHIELDING PERFORMANCE



Please note:

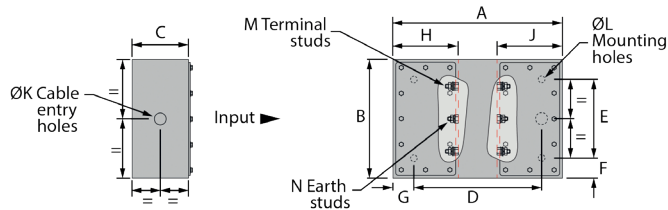
all 8080 filters can NOT be protected by a standard 30mA residual circuit breaker (RCCB). However, a RCCB protection device can be placed down line / load side of filter.

RESIDUAL PULSE (800 MA)

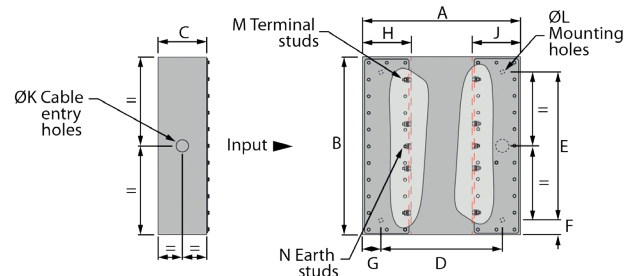


» HEMP/NEMP POWERLINE FILTER 8080

2 LINE POWER FILTER



4 LINE POWER FILTER

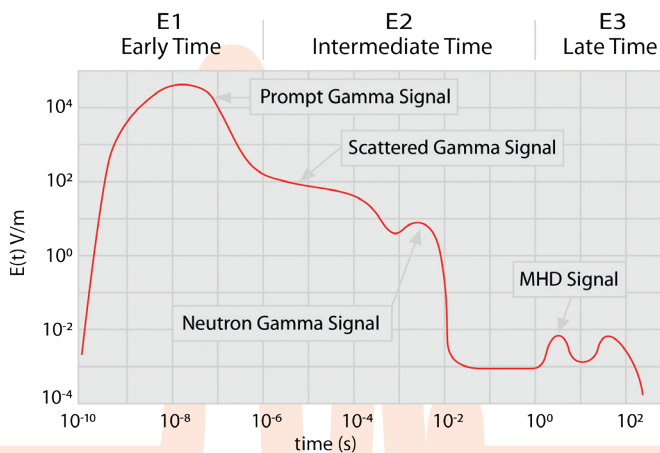


DIMENSIONS (MM)

partnumber	A	B	C	D	E	F	G	H	J	K	L	M	N	Mass Approx.
8080-2-16	393	240	138.5	323	150	45	35	120.75	120.75	21	11	M6	M6	10 kg
8080-4-16	539	400	120	320	390	45	35	120	120	21	11	M8	M8	20 kg
8080-2-32	393	240	138.5	323	150	45	35	120.75	120.75	21	11	M6	M6	10 kg
8080-4-32	633	560	138.5	533	520	20	50	150.75	150.75	33	11	M6	M6	20 kg
8080-4-63	633	560	138.5	533	520	20	50	150.75	150.75	33	11	M6	M6	55 kg
8080-4-125	450	480	120	400	440	20	25	150	150	52	11	M12	M12	65 kg
8080-4-200	700	620	175	640	560	30	30	200	200	52	17	M12	M12	80 kg
8080-4-400	1000	770	250	860	630	70	70	300	300	64	17	M20	M20	100 kg

INSERTION LOSS AND E1 AND E2 PULSE TESTING FACILITY

As the only filter producer that can perform individual pulse testing, we are able to guarantee that your filter will protect your facility and not just on paper. Our filters are tested with our in-house test facility with which we are capable to perform PCI as per E1 (20 / 500 ns 2.5 kA peak) and E2 (1.5 / 4000 μ s 250 A peak) test pulses. With our testing facilities we make sure that our filters comply with the highest demands and that the residual currents are within limits of the applicable standards and norms.



Unclassified nominal HEMP composite environment (E1, E2 and E3)

The intense electromagnetic pulse (EMP) is generated by the phenomenon called "Compton effect" or "Compton scattering". The nuclear explosion that generates this transient electromagnetic disturbance is also known as NEMP (Nuclear Electromagnetic Pulse) or HEMP (High altitude Electromagnetic Pulse). The HEMP is typically defined as a combination of three consecutive pulses called early time (E1), intermediate time (E2) and late time (E3). This is shown in the graph on the side.