

FILTERS & FEED-THROUGH FOR SHIELDED BOX

Shielded boxes can be extended with different types of filters



We produce filter units that are suitable for use directly in our medium performance shielded boxes. These filters can also be used for other medium performance shielded enclosures such as Faraday tents. Please note: custom filters can be made on request.

STANDARD TYPES



Type 1
2x RJ45 + 2x USB + 2x DC



Type 2
1x DC + 1x RJ45 + 2x USB + 1x DB9



Type 3
USB 2.0



Type 4
6x SMA



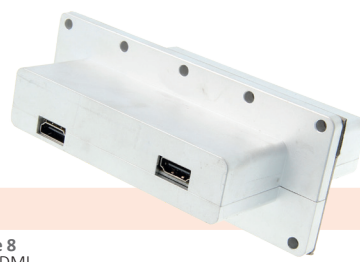
Type 5
AC- Power line filters + 2x DC



Type 6
1x DB25 + 1x DB9



Type 7
2x RJ45 + 2x USB + VGA



Type 8
2x HDMI



Type 9
2x RJ45 + 4x USB 2.0 + USB 3.0

» FILTERS & FEED-THROUGH FOR SHIELDED BOX



Type 10
DB25 + VGA



Type 11
2x USB 2.0 + 4x RJ45



Type 12
5x RJ45



Type 13
2x USB 3.0 + 3x RJ45



Type 14
2x RJ45 + 2x USB + DB9



Type 15
10x terminal, max 50 VDC 3A



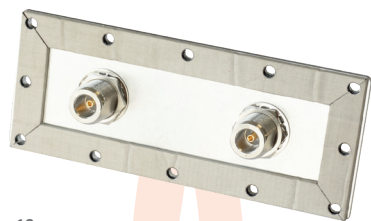
Type 16
8x Banana, max 50 VDC 3A



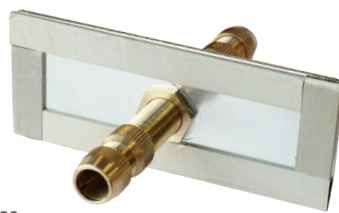
Type 17
4x thumbscrew, max 50 VDC 20 A



Type 18
2 x antenna bnc connector (more on request)



Type 19
2 x antenna N-connector (more on request)



Type 20
14mm Waveguide



Type 21
2x USB-C ports + 3x RJ45



Type 22
4x USB + 3x RJ45