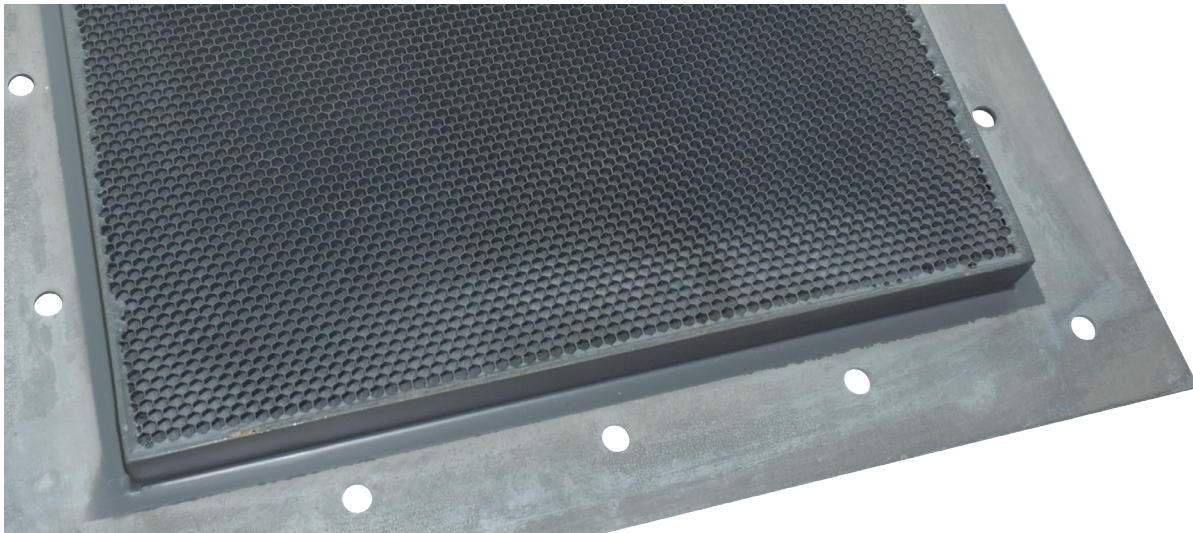


BRASS HONEYCOMB VENTILATION PANELS 9550

A honeycomb made of brass material for ventilation or acoustic/visual contact



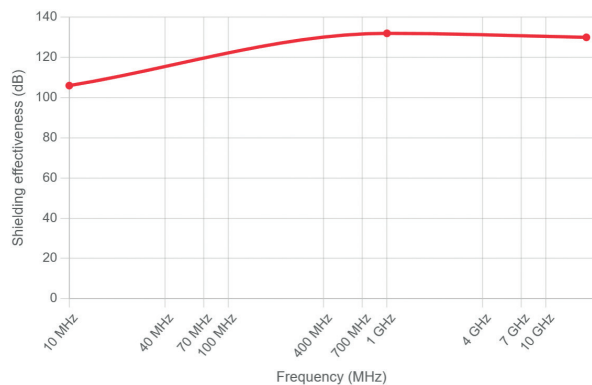
The brass honeycombs are used to shield ventilation openings in your Faraday cage. Their unique honeycomb structure ensures optimal airflow while effectively blocking electromagnetic radiation. Ventilation can be based on natural air circulation or connected to your building's ventilation system.

Each honeycomb panel is made of brass and finished with a tin layer, providing excellent corrosion resistance and high electrical conductivity. This ensures long-lasting performance and reliability in both industrial and laboratory environments.

SPECIFICATIONS AND PERFORMANCE

With a thickness of 25 mm and a cell size of 4 mm, the brass honeycombs are designed to achieve attenuation above 120 dB up to 30 GHz and beyond. The honeycomb geometry and depth minimize air turbulence while maintaining maximum airflow, ensuring efficient cooling and consistent shielding performance.

SHIELDING EFFECTIVENESS

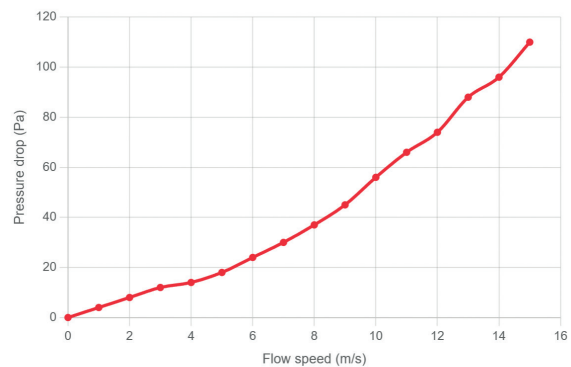


9550 - Brass honeycomb

BENEFITS

- High shielding effectiveness up to and above 30 GHz
- Excellent corrosion resistance due to tin coating
- Suitable for both natural and forced ventilation
- Reduced air turbulence for optimized airflow
- Available in multiple standard sizes and custom dimensions

AIRFLOW CHARACTERISTICS



9550 - Brass honeycomb ventilation panels

ORDER EXAMPLE

Part number	Size	Gasket
9550	100X100 : 180 x 180 mm with a flow area of 100 x 100 mm 150X150 : 230 X 230 mm with a flow area of 150 x 150 mm 300X300 : 400 x 400 mm with a flow area of 300 x 300 mm	N : No gasket A : Gasket side A B : Gasket side B