

## WASHER, CYLINDER AND SPRINGS 5500

Materials are used for grounding, contact point water tight rings or flexible springs. These can be used to contact PCB to housing.



Standard Nickel-graphite conductive rubber are used for EMI applications. The rubber is made conductive by incorporating small conductive metal particles throughout the material. It can provide an EMI-proof and watertight seal in narrow constructions. But they are also useful for EMP protection, wave-guide applications and against static electricity.

When in need of high deflection and low closure force we make conductive foams. The material will return to almost its original height when released. The foam is covered with a layer of conductive polyurethane to protect it from environmental influences and to prevent burrs when cutting. Its conductivity is excellent in all directions. Conductive foam is fire retardant as well as RoHS compliant.

### TECHNICAL DATA

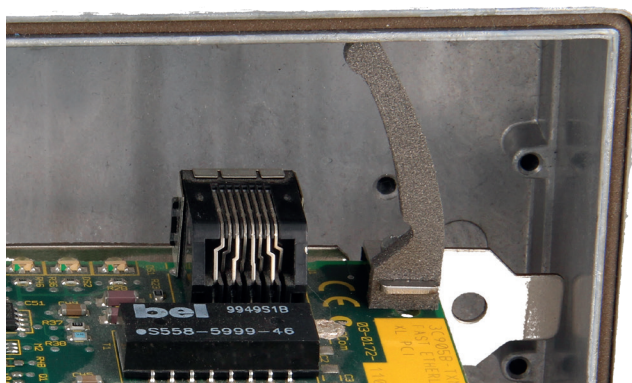
Item	Data
Thickness (mm)	1, 2, 2.2 or 3.4 (other sizes on request)
Color	Gray
Adhesive strength (gf/25mm)	>1.000
Holding strength (sec)	>3.600
Surface resistance ( $\Omega$ /sq)	0.2
Surface resistance ( $\Omega$ /in)	1.0 max
Volume resistance ( $\Omega$ /sq)	0.2
Top-bottom resistance ( $\Omega$ /in)	1.0 max
RoHS	Compliant
Fire retardant (cm/min)	Pass

### BENEFITS

- Any size in a few day's
- Custom parts
- High temperature up to 220 °C
- Easy to mount
- Water tight constructions

### OPTIONS

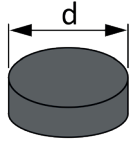
- Available in different thicknesses
- Low compression force
- Rubber with silver particles



## » WASHER, CYLINDER AND SPRINGS 5500

### STOCK DIMENSIONS

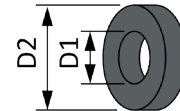
#### 5500-C CYLINDER



D (mm) Available in thickness 1-1,5-2-3-4mm. other dimensions on request	
2	16
3	18
4	20
5	22
6	24
8	26
10	28
12	30
14	32
Other dimensions on request. MOQ 10 pieces	

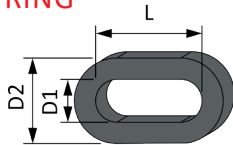


#### 5500-R WASHER/RING



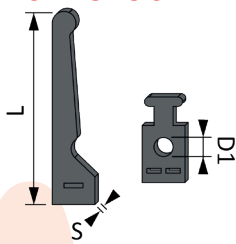
D1xD2 Available in thickness 1-1,5-2-3-4mm, other thicknesses on request	
2 x 5	16 x 32
3 x 7	18 x 36
4 x 9	20 x 40
5 x 10	22 x 44
6 x 12	24 x 48
8 x 16	26 x 52
10 x 20	28 x 56
12 x 24	30 x 60
14 x 28	32 x 64
Other dimensions on request. MOQ 10 pieces	

#### 5500-OR OVAL-RING



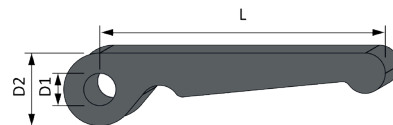
D1	D2	L
2	5	10-15-20-25-30-35
3	7	15-20-25-30-35-40
4	9	20-25-30-35-40-45
Other dimensions on request. MOQ 10 pieces		

#### 5500-VGS VERTICAL GROUNDING SPRING



S	D	L
2	2-3-4	10-15-20-25-30-35
3	2-3-4	15-20-25-30-35-40
4	2-3-4	20-25-30-35-40-45
Other dimensions on request. MOQ 10 pieces		

#### 5500-GS GROUNDING SPRING



D1	D2	L
2	5	10-15-20-25-30-35
3	7	15-20-25-30-35-40
4	9	20-25-30-35-40-45
Other dimensions on request. MOQ 10 pieces		

#### \*Notice

Information supplied in these data sheets is based on independent and laboratory tests which Holland Shielding Systems BV, hereafter referred to as HSS believes to be reliable. HSS has no control over the design of customer's product which incorporates products, therefore it is the responsibility of the user to determine the suitability for his particular application and we recommend that the user make his own test to determine suitability.

The product described in this data sheet shall be of standard quality, however the products are sold without warranty of fitness for a particular purpose, either expressed or implied, except to the extent expressly stated on HSS invoice, quotation or order acknowledgment. HSS does not warrant that products described in this data sheet will be free of conflict with existing or future patents of third parties. All risks of lack of fitness, patent infringement and the like are assumed by the user.