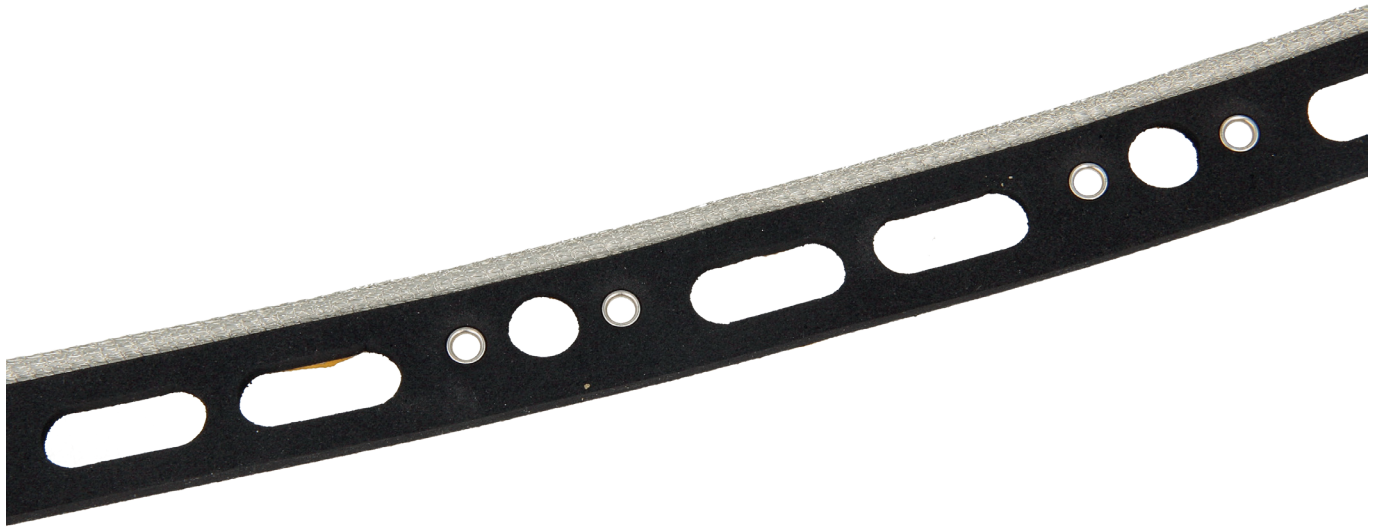


EMC-IP GASKET WITH CONTROLLED COMPRESSION STOPS 1230

EMC-IP gasket with controlled compression stops for EMI and EMP protection

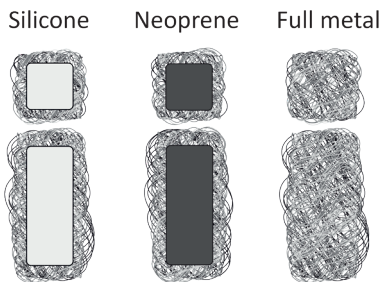


This gasket is used for screwed connections for EMI and EMP protection. The water seal is made out of flame retardant neoprene foam. In the water seal are not only holes for bolts but also holes to make the foam more easy to compress. This makes it so that it can be used to screw thinner plates together without bending.

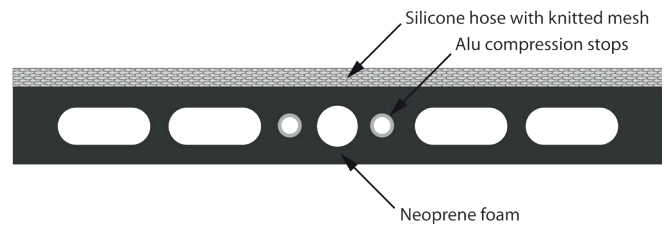
Around the bolt holes are compression stops to prevent the gasket overstretches. This makes it possible so that with a torque control the gasket is under exactly the right stress for water and EMI sealing during mounting. The bolt holes can be made at any distance. The compression stops can be out of metal or plastic. The thickness and width can change as well as the reduction of the compression force, without influence on the shielding capacities.

KNITTED MESH CORE

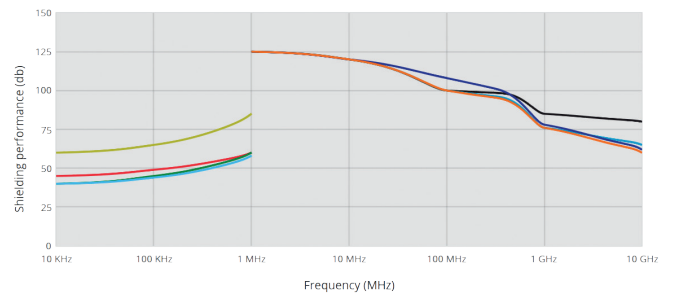
The core of the knitted mesh material can be made in:



TECHNICAL DRAWING



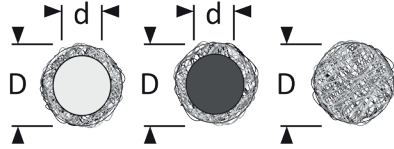
KNITTED MESH SHIELDING PERFORMANCE



- Monel (H field)
- Monel (E field + P field)
- Aluminium (H field)
- Aluminium (E field + P field)
- TCS (H field)
- TCS (E field + P field)
- S/Steel (H field)
- S/Steel (E field + P field)

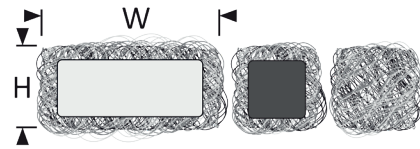
» 1230 - EMC-IP GASKET WITH CONTROLLED COMPRESSION STOPS

KNITTED MESH SHAPE



ROUND CORE

D (mm) or D x d (mm)		
1.6	4.8 x 3.2	9.5 x 6.4
2.4	6.4	11.1
3.2	6.4 x 3.2	11.1 x 8.0
3.2 x 1.6	7.9	12.7
4.0	8.0 x 4.8	12.7 x 9.5
4.8	9.5	14.9 x 11.1

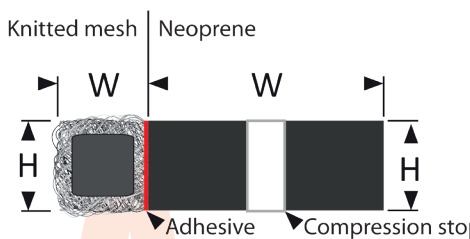
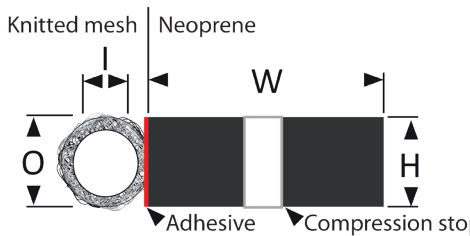


RECTANGULAR & SQUARE

w x h (mm)		
3.2 x 1.6	9.5 x 3.2	19.1 x 12.7
3.2 x 2.4	9.5 x 4.8	20 x 6
3.2 x 3.2	9.5 x 6.4	20 x 8
4.0 x 3.2	12.7 x 6.4	20 x 10
4.8 x 2.4	12.7 x 9.5	20 x 12
4.8 x 3.2	12.7 x 12.7	20 x 20
4.8 x 4.8	15 x 6	25 x 6
6.4 x 1.6	15 x 8	25 x 8
6.4 x 2.4	15 x 10	25 x 10
6.4 x 3.2	15 x 12	25 x 12
6.4 x 4.8	15 x 15	25 x 18
6.4 x 6.4	15.9 x 9.5	25 x 20

NEOPRENE FOAM (BASE MATERIAL)

The base material of the gasket is made of neoprene that can be ordered in different widths and lengths. The thickness of the foam can be ordered in: 1, 2, 3, 4, 5, 6, 7, 8, 10 and 12 mm.



If you send us a drawing, please include the dimensions shown above. For a inquiry send a email to info@hollandshielding.com

*Notice

Information supplied in these data sheets is based on independent and laboratory tests which Holland Shielding Systems BV, hereafter referred to as HSS believes to be reliable. HSS has no control over the design of customer's product which incorporates products, therefore it is the responsibility of the user to determine the suitability for his particular application and we recommend that the user make his own test to determine suitability.

The product described in this data sheet shall be of standard quality, however the products are sold without warranty of fitness for a particular purpose, either expressed or implied, except to the extent expressly stated on HSS invoice, quotation or order acknowledgment. HSS does not warrant that products described in this data sheet will be free of conflict with existing or future patents of third parties. All risks of lack of fitness, patent infringement and the like are assumed by the user.