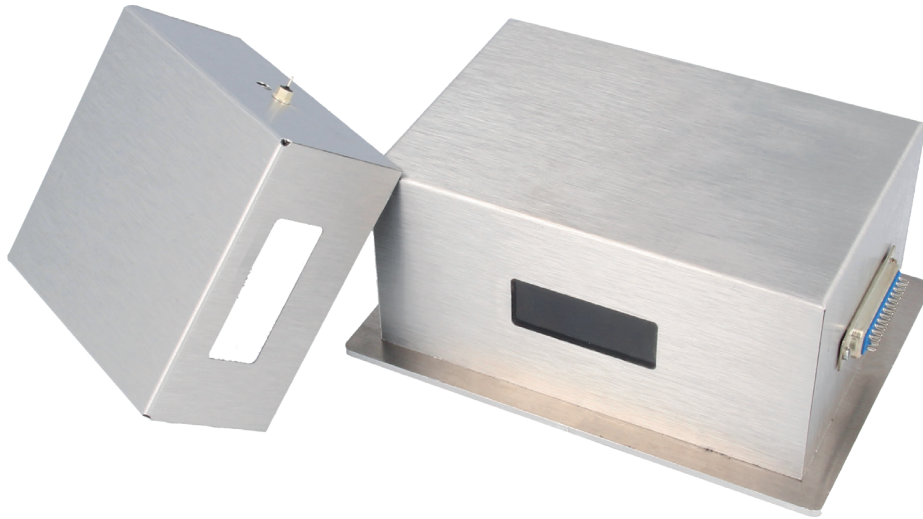


DOUBLE EMI SHIELDED HOUSINGS 1950

High performance double-layer shielded enclosures, producible in any shape or size



These electronic enclosures are designed for applications requiring EMI/RFI shielding. The double walls provide excellent shielding performance in the range of 1 MHz- 20 GHz. The body is made of two sheets of 0.3mm Amucor with a solid polyethylene core.

Excellent attenuation is not the only feature of these EMC shielded enclosures. They also look quite attractive thanks to the brushed metal and anti-fingerprint coating.

For enclosure with sides longer than 600mm we make these housings or cabinets in a version that is 6mm thick, so the walls have sufficient stiffness.

BENEFITS

- High EMI shielding performance
- Construction provides strength and rigidity for heavy duty applications
- These EMI shielding enclosures look very nice and are fingerprint proof
- Can be delivered in any size and according to your drawing
- We have over 18.000 models in stock so the appropriate version for your application will always be available
- Low weight construction due to the high performance Amucor shield sandwich construction
- Also suitable for prototyping and small series (up to 1.000 pcs)
- Easily machined and modified to your particular requirements
- Superior surface
- Provides excellent durability in outdoor applications
- Approximately one half the weight of full metal EMI shielded housings on the market

OPTIONS

- Recessed areas can be provided for connectors, displays and switches
- The enclosures can be produced with your logo
- Version with hinged lid
- With vents or Honeycomb ventilation panel depending on the desired attenuation and the need for cooling

FLAMMABILITY CHARACTERISTICS

- Self extinguishing
- UL 94V-0
- Class 1 or Class A fire rating (ASTM E-84)

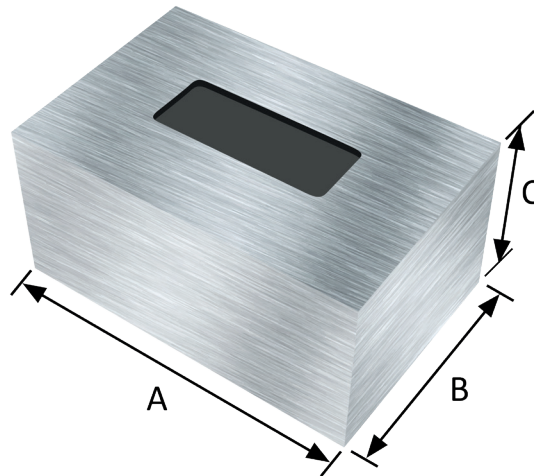
TECHNICAL SPECIFICATIONS

Wall thickness of the material	3mm (thicker on request)
Temperature resistance	-50 °C to +80 °C

QUOTATION

For a quotation please send us a drawing specifying the measurements and attenuation needed. For a realistic estimate please also mention the options the shielded housing should be provided with.

» DOUBLE EMI SHIELDED HOUSINGS 1950



RECTANGULAR EMI-SHIELDING HOUSINGS (HEIGHT 5 TO 50MM)

Length A (mm)	Width B (mm)	Height C (mm)						
		50	75	100	150	200	250	300
50	100	1950-50-100-50	1950-50-100-75	1950-50-100-100	1950-50-100-150	1950-50-100-200	1950-50-100-250	1950-50-100-300
75	125	1950-75-125-50	1950-75-125-75	1950-75-125-100	1950-75-125-150	1950-75-125-200	1950-75-125-250	1950-75-125-300
100	150	1950-100-150-50	1950-100-150-75	1950-100-150-100	1950-100-150-150	1950-100-150-200	1950-100-150-250	1950-100-150-300
125	175	1950-125-175-50	1950-125-175-75	1950-125-175-100	1950-125-175-150	1950-125-175-200	1950-125-175-250	1950-125-175-300
150	200	1950-150-200-50	1950-150-200-75	1950-150-200-100	1950-150-200-150	1950-150-200-200	1950-150-200-250	1950-150-200-300
200	250	1950-200-250-50	1950-200-250-75	1950-200-250-100	1950-200-250-150	1950-200-250-200	1950-200-250-250	1950-200-250-300
250	300	1950-250-300-50	1950-250-300-75	1950-250-300-100	1950-250-300-150	1950-250-300-200	1950-250-300-250	1950-250-300-300
300	350	1950-300-350-50	1950-300-350-75	1950-300-350-100	1950-300-350-150	1950-300-350-200	1950-300-350-250	1950-300-350-300

Custom sizes and shapes can be produced on request and according to the customer's drawing. To request a quote for a custom shape, please send your drawing to info@hollandshielding.com.

SQUARE EMI-SHIELDING HOUSINGS (HEIGHT 5 TO 50MM)

Length A (mm)	Width B (mm)	Height C (mm)						
		50	75	100	150	200	250	300
50	50	1950-50-50-50	1950-50-50-75	1950-50-50-100	1950-50-50-150	1950-50-50-200	1950-50-50-250	1950-50-50-300
75	75	1950-75-75-50	1950-75-75-75	1950-75-75-100	1950-75-75-150	1950-75-75-200	1950-75-75-250	1950-75-75-300
100	100	1950-100-100-50	1950-100-100-75	1950-100-100-100	1950-100-100-150	1950-100-100-200	1950-100-100-250	1950-100-100-300
150	150	1950-150-150-50	1950-150-150-75	1950-150-150-100	1950-150-150-150	1950-150-150-200	1950-150-150-250	1950-150-150-300
200	200	1950-200-200-50	1950-200-200-75	1950-200-200-100	1950-200-200-150	1950-200-200-200	1950-200-200-250	1950-200-200-300
250	250	1950-250-250-50	1950-250-250-75	1950-250-250-100	1950-250-250-150	1950-250-250-200	1950-250-250-250	1950-250-250-300
300	300	1950-300-300-50	1950-300-300-75	1950-300-300-100	1950-300-300-150	1950-300-300-200	1950-300-300-250	1950-300-300-300
350	350	1950-350-350-50	1950-350-350-75	1950-350-350-100	1950-350-350-150	1950-350-350-200	1950-350-350-250	1950-350-350-300

Custom sizes and shapes can be produced on request and according to the customer's drawing. To request a quote for a custom shape, please send your drawing to info@hollandshielding.com.

ORDER EXAMPLE

Series	Length A (mm)	Width B (mm)	Height C (mm)	Shielded window
1950	Specify the length in mm.	Specify the width in mm.	Specify the height in mm.	W : With shielded window NW : Without shielded window

*Notice

Information supplied in these data sheets is based on independent and laboratory tests which Holland Shielding Systems BV, hereafter referred to as HSS believes to be reliable. HSS has no control over the design of customer's product which incorporates products, therefore it is the responsibility of the user to determine the suitability for his particular application and we recommend that the user make his own test to determine suitability.

The product described in this data sheet shall be of standard quality, however the products are sold without warranty of fitness for a particular purpose, either expressed or implied, except to the extent expressly stated on HSS invoice, quotation or order acknowledgment. HSS does not warrant that products described in this data sheet will be free of conflict with existing or future patents of third parties. All risks of lack of fitness, patent infringement and the like are assumed by the user.